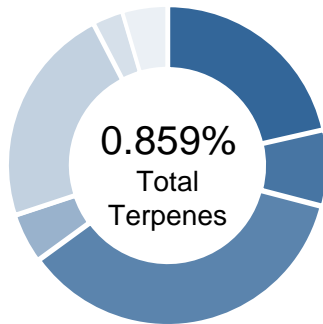


prepared for: OG MEDICINALS LLC

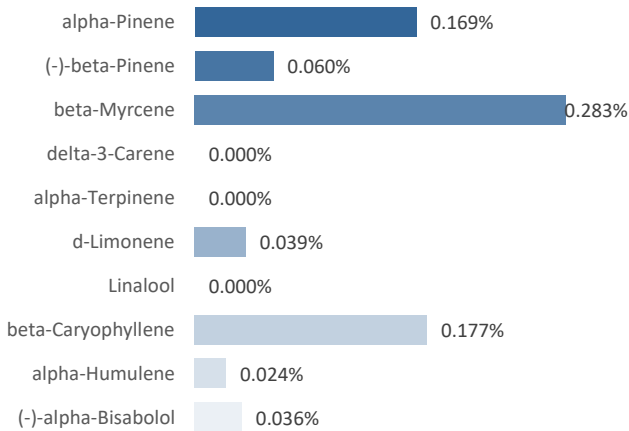
 403R-00137  
 4995 LIMA STREET  
 DENVER, CO 80239

**Sensi Star Flower**


|                   |                          |                |          |
|-------------------|--------------------------|----------------|----------|
| <b>METRC ID:</b>  | 1A400031266EE69000006143 | <b>Class:</b>  | Retail   |
| <b>Batch ID:</b>  | N/A                      | <b>Type:</b>   | Flower   |
| <b>Manifest:</b>  | 1866643                  | <b>Test:</b>   | Terpenes |
| <b>Submitted:</b> | 26-Dec-2017 @ 14:30      | <b>Method:</b> | TM10     |
| <b>Reported:</b>  | 4-Jan-2018               |                |          |

**TERPENE PROFILE**


| Compound                | %(w/w)        | mg/g        |
|-------------------------|---------------|-------------|
| (-)-alpha-Bisabolol     | 0.036%        | 0.36        |
| Camphene                | 0.005%        | 0.05        |
| delta-3-Carene          | 0.000%        | 0.00        |
| beta-Caryophyllene      | 0.177%        | 1.77        |
| (-)-Caryophyllene Oxide | 0.000%        | 0.00        |
| p-Cymene                | 0.000%        | 0.00        |
| Eucalyptol              | 0.002%        | 0.02        |
| Geraniol                | 0.000%        | 0.00        |
| (-)-Guaiol              | 0.050%        | 0.50        |
| alpha-Humulene          | 0.024%        | 0.24        |
| (-)-Isopulegol          | 0.000%        | 0.00        |
| d-Limonene              | 0.039%        | 0.39        |
| Linalool                | 0.000%        | 0.00        |
| beta-Myrcene            | 0.283%        | 2.83        |
| cis-Nerolidol           | 0.000%        | 0.00        |
| trans-Nerolidol         | 0.000%        | 0.00        |
| Ocimene                 | 0.000%        | 0.00        |
| beta-Ocimene            | 0.011%        | 0.11        |
| alpha-Pinene            | 0.169%        | 1.69        |
| (-)-beta-Pinene         | 0.060%        | 0.60        |
| alpha-Terpinene         | 0.000%        | 0.00        |
| gamma-Terpinene         | 0.003%        | 0.03        |
| Terpinolene             | 0.000%        | 0.00        |
|                         | <b>0.859%</b> | <b>8.59</b> |

**PREDOMINANT TERPENES**

**NOTES:**

Free from visual mold, mildew, and foreign matter.

**FINAL APPROVAL**


**Greg Zimpfer**  
 4-Jan-2018  
 9:38 AM

PREPARED BY / DATE



**Chris Jungling**  
 4-Jan-2018  
 4:06 PM

APPROVED BY / DATE

**PASS**

FINAL STATUS

Testing results are based solely upon the sample submitted to Agricor Laboratories, LLC. Agricor Laboratories, LLC warrants that all analytical work is conducted professionally in accordance with all applicable standard laboratory practices using validated methods. Data was generated using an unbroken chain of comparison to NIST traceable Reference Standards and Certified Reference Materials. This report may not be reproduced, except in full, without the written approval of Agricor Laboratories, LLC. ISO/IEC 17025:2005 Accredited A2LA Certificate Number 4329.01